

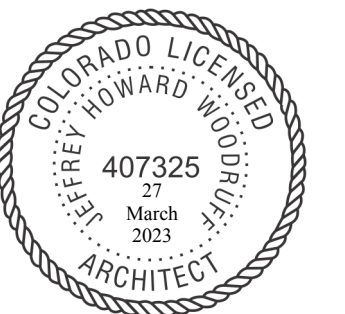
INTEGRATED DESIGN TEAM

Civil Grading and Drainage
Jay Engstrom, P.E.
Crystal River Civil, LLC

Landscape Architect
Jennifer M. Dolecki-Smith, RLA
Escape Garden Design, LLC

Structural Engineer
Brian Fossiter, P.E.
bwr.pe

Contractor
Adam Rothberg
Rothberg Development



312 W Hyman Ave
312 W Hyman Ave Lots P+Q,
Block 46 Aspen CO 81611 USA/
Pitkin County UGB, City of Aspen

312 W Hyman Ave Aspen CO
81611 USA

Powder Day Skiing, LLC, David A
Tarrab Mees

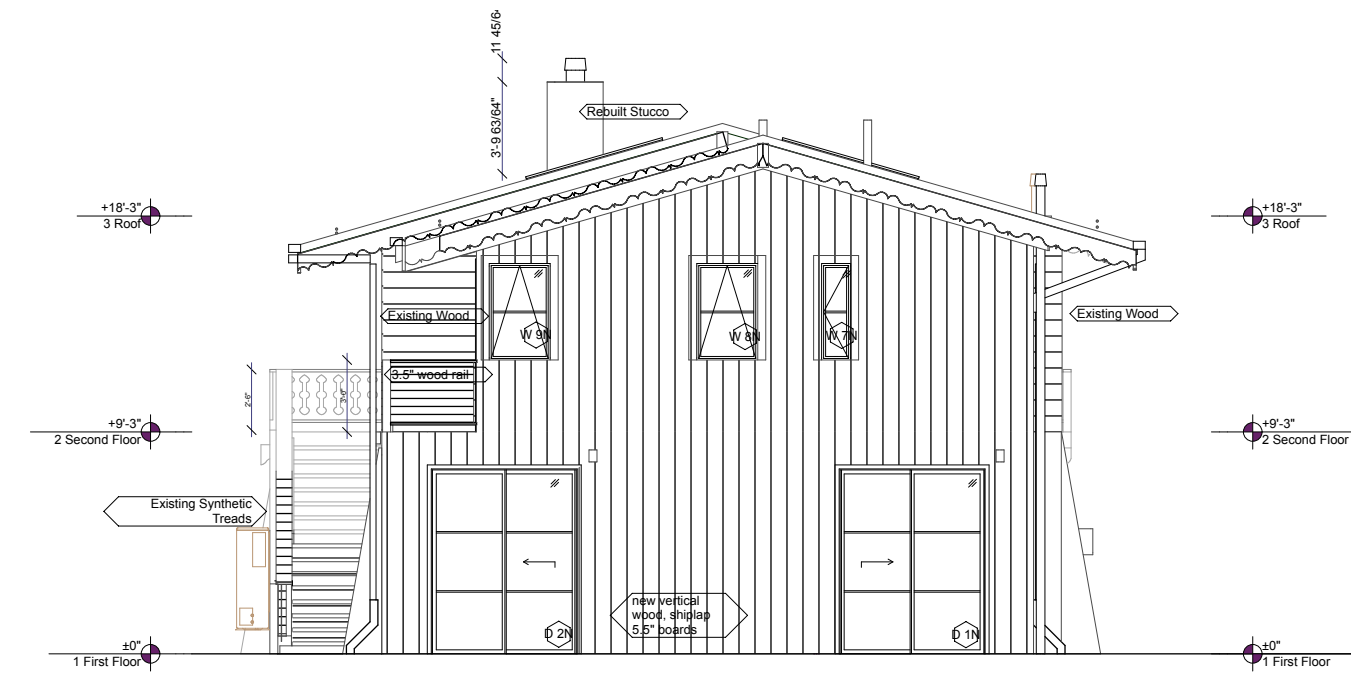
Account # R000145
Parcel ID # 273512464006

- 08/22/21 COA- HPO Site Visit
- 02/26/22 COA- HPC Conceptual I
- 04/27/22 COA- HPC Conceptual II
- 07/27/22 COA- HPC Final
- 10/12/22 COA- City Council Call Up
- 04/12/23 COA- HPC Substantial
- 06/28/23 COA- Permit Submittal
- 06/01/24 COA- Building comments, R 4

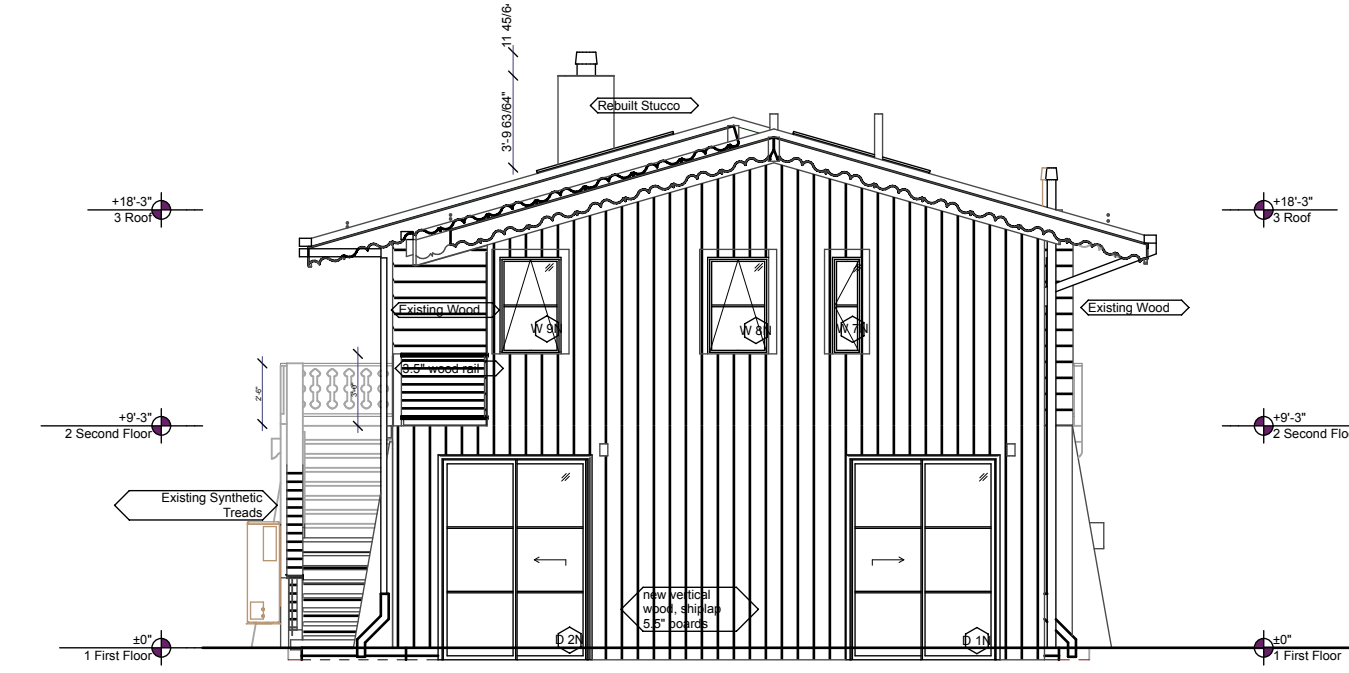
PROJECT NO: Project No. 116
MODEL FILE:
312_W_Hyman_07292024.pln
DRAWN BY: Jeffrey H Woodruff
COPYRIGHT:

SHEET TITLE
HPC Approved and SAM

H7



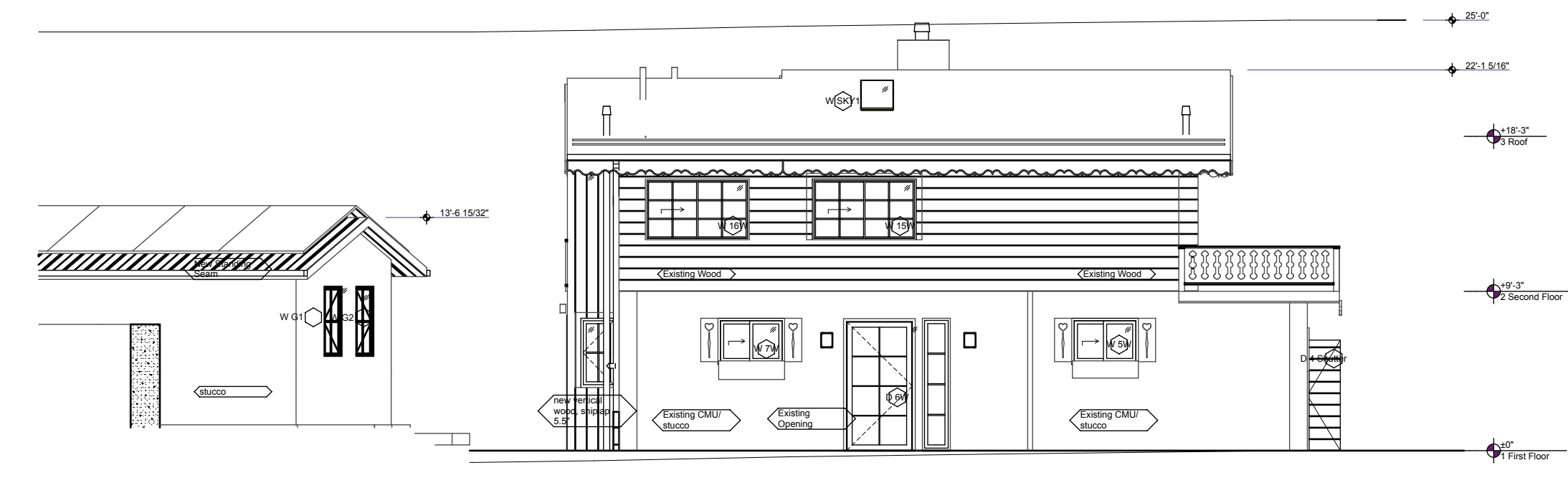
3 H7 First Floor HPC Approved
SCALE: 6" = 1'-0"



3 H7 HPO SAM Proposed
SCALE: 1/8" = 1'-0"

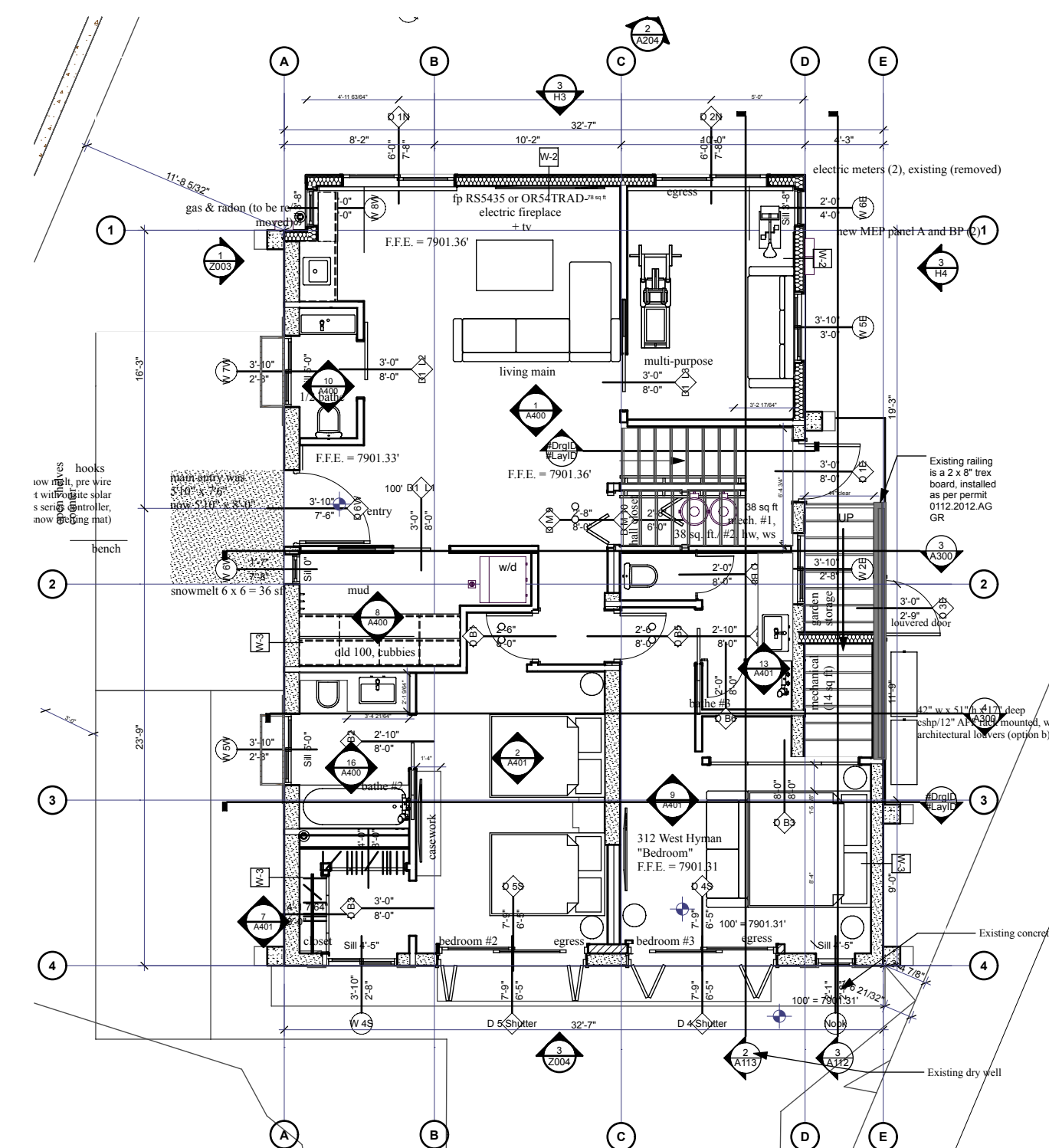


3 H7 HPO Approved
SCALE: 1/4" = 1'-0"

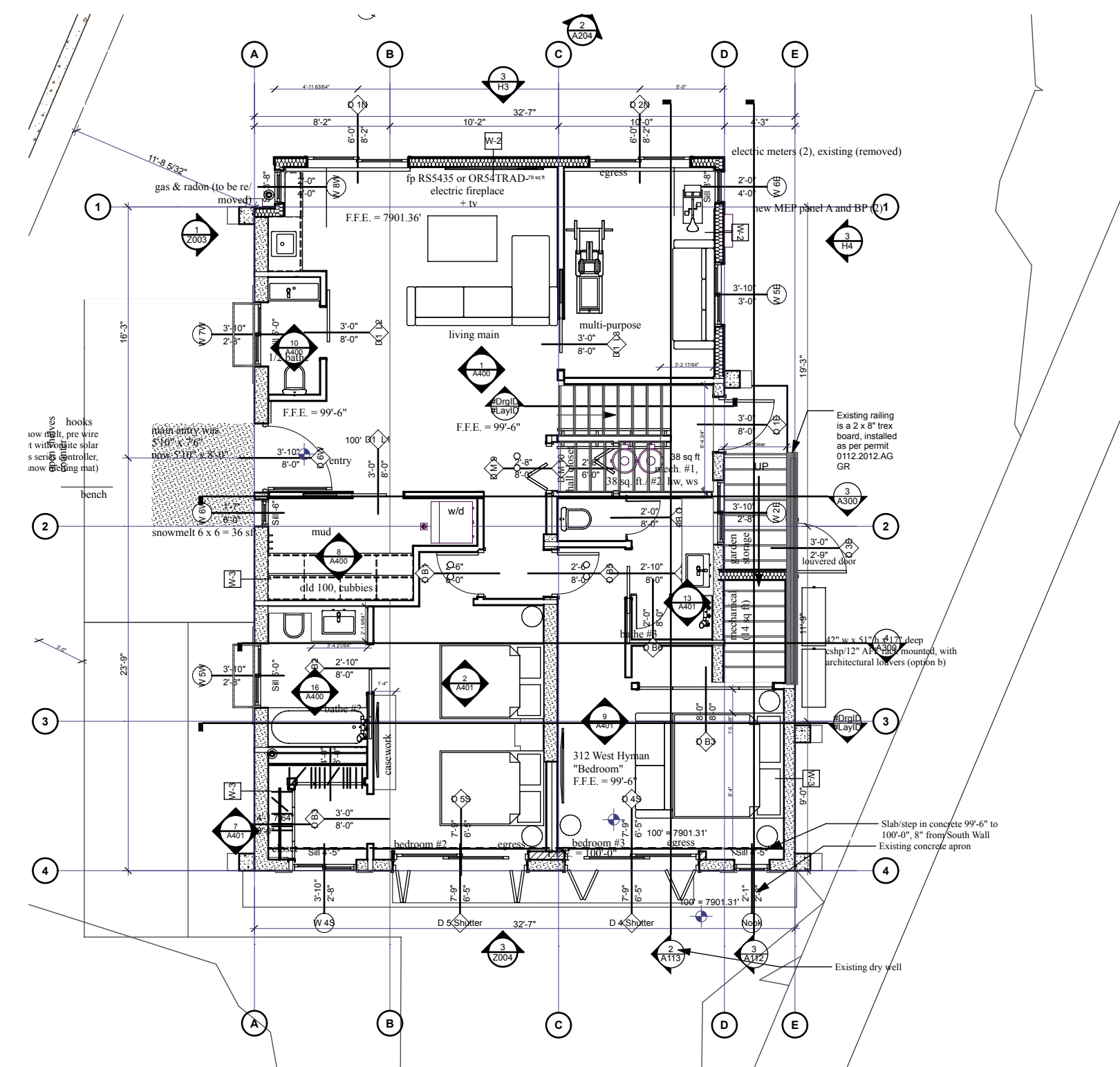


3 H7 HPO Approved
SCALE: 1/8" = 1'-0"

6 H7 First Floor HPC Approved
SCALE: 6" = 1'-0"



4 H7 First Floor HPC Approved
SCALE: 1" = 1'-0"



5 H7 First Floor SAM proposed
SCALE: 1/8" = 1'-0"